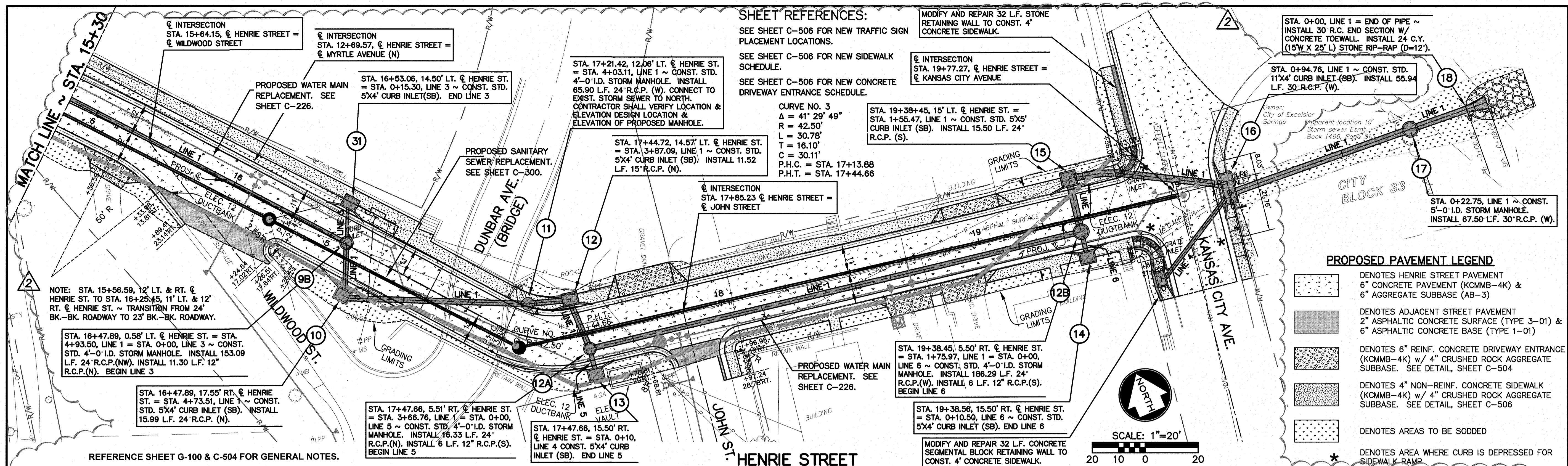
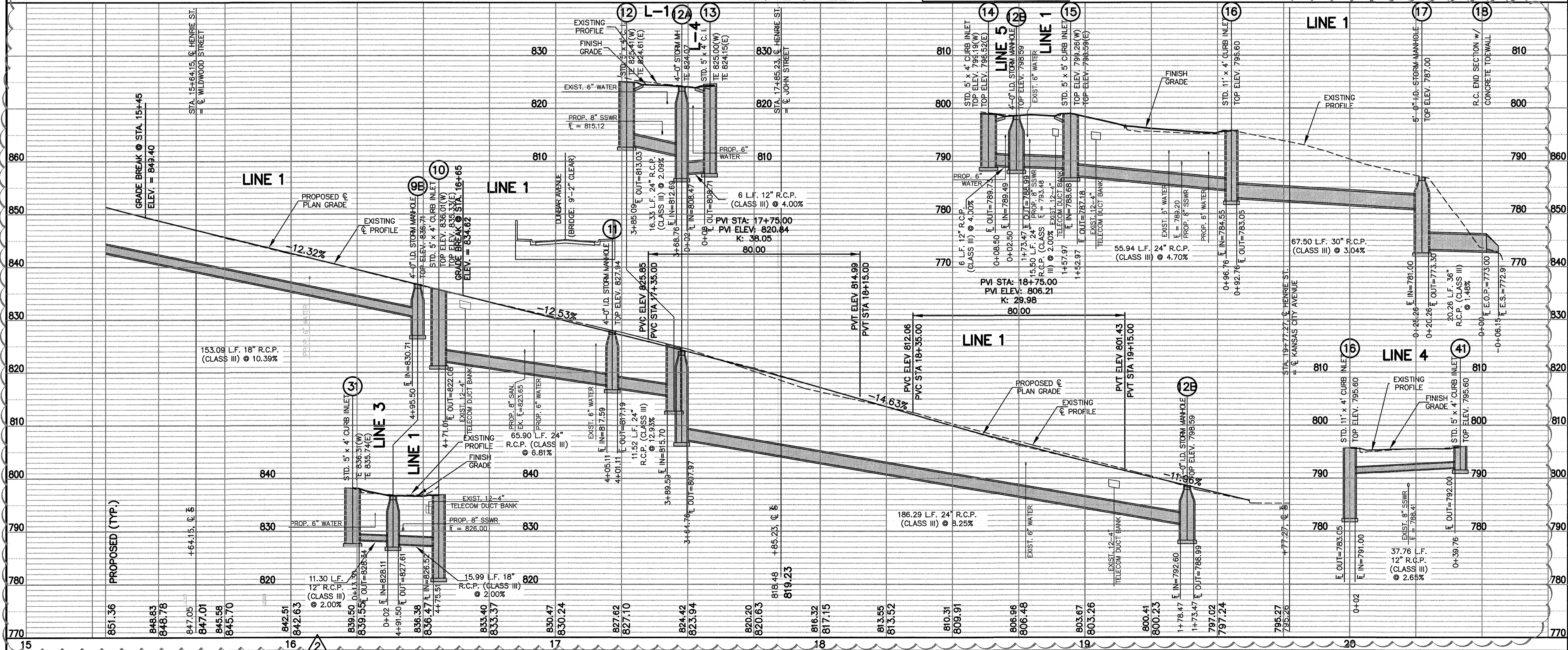
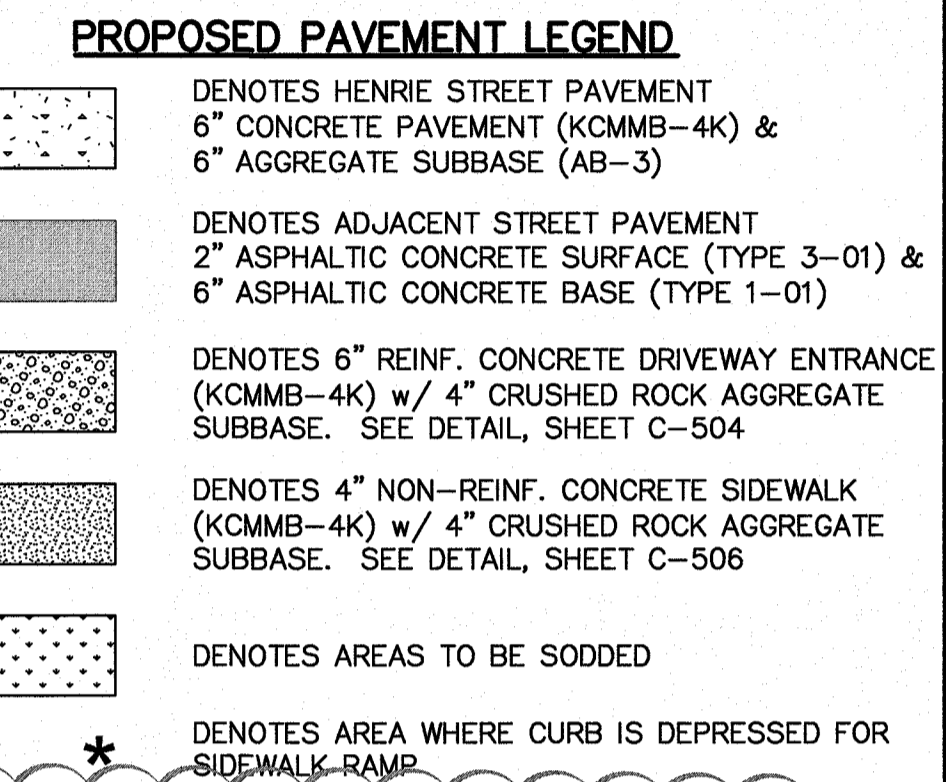


L:\108532-130\CAD\CIVIL\STREET & STORM\108532-130 HENRIE S&S PP_1_1_0364.DWG
 LAYOUT: 02 DATE: 10/28/2015
 XREF DWG1: NONE XREF DWG2: NONE
 XREF DWG3: NONE XREF DWG4: NONE



SHEET REFERENCES:
 SEE SHEET C-506 FOR NEW TRAFFIC SIGN PLACEMENT LOCATIONS.
 SEE SHEET C-506 FOR NEW SIDEWALK SCHEDULE.
 SEE SHEET C-506 FOR NEW CONCRETE DRIVEWAY ENTRANCE SCHEDULE.



NO.	DATE	REVISIONS	BY	APPD
5				
4				
3				
2	10-27-15	REV. STORM PER EX. ELEC. 12" DUCTBANK	KLJ	MVE
1	09-24-15	STORM ADJUSTMENTS & SHOP DWG REVIEW	KLJ	MVE

Designed By: KLJ
 Drawn By: KLJ
 Checked By: MVE
 Issue Date: 05-14-15

SHAFER, KLINE & WARREN, INC.
 11250 Corporate Avenue, Lenexa, KS 66219-1392
 913/888-7800 FAX: 913/788-7868

OFFICE LOCATIONS:
 COLUMBIA, MO
 HOUSTON, TX
 LENEXA, KS
 MACON, MO
 NORTH KANSAS CITY, MO
 TULSA, OK

CIVIL ENGINEERS ELECTRICAL ENGINEERS MECHANICAL ENGINEERS LANDSCAPE ARCHITECTS LAND SURVEYORS LAND PLANNERS

CITY OF EXCELSIOR SPRINGS, MO.
 WATERLINE REPLACEMENTS

HENRIE STREET AREA
 STORM SEWER: PLAN & PROFILE

108532-130
 SHEET NO.
C-502